

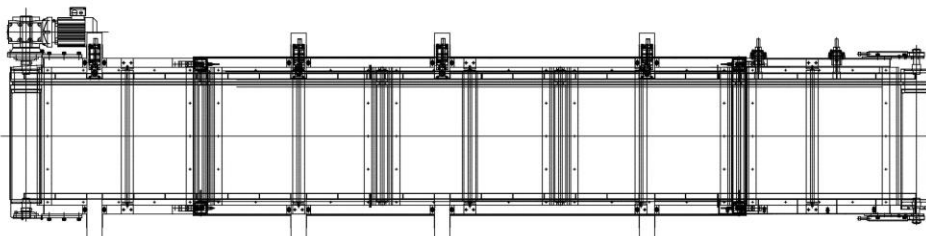
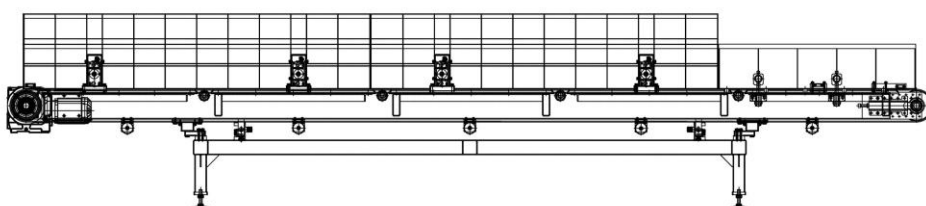


**BUKO-S s.r.o.**

Průmyslový areál na Baťově, budova č.55, P.O.Box 23  
tř. T. Bati 1644, 765 01 Otrokovice 1  
Česká republika



## WEIGHING CONVEYOR - Polymer Feeding Line -



Telefon: +420577663734  
+420577663735  
+420577663732

Tel./fax: +420 577663733  
Email: [buko-s@volny.cz](mailto:buko-s@volny.cz),  
[www.buko-s.cz](http://www.buko-s.cz)

Bankovní spojení  
KB Otrokovice  
č.ú.: 196440570207/0100

IČO: 63477548  
DIČ: CZ63477548  
OR: odd.C.vložka 20569

## **MAIN DESCRIPTION**

Weighing conveyor is equipment for weighing and transporting rubber mixture from the Batchfeeder(s) to The Feeding conveyor. This c/v consists from two parts. The upper part is normal conveyor. Lower part is located under Weighing conveyor like supporting frame. Weighting is done by four load cells mounted between upper and lower frames. Between upper and lower frames are four screws for easier load cells maintenance or exchange. The upper part of the belt is by the special anti-adhesive plastic plates and rolls supported. Bottom part of belt is by rolls supported too to avoid belt sagging. On both sides are lateral sideboards installed. These sideboards are under Batchfeeder(s) moveable by pneum. cylinders for better compound positioning / centering during weighing process.

On the operator side is one tilted sideboard for better manipulation with bales. The conveyor is driven by electric gear box SEW.

Frames are connected by conduit and fixed parts and serve also for load cells maintenance.

The conveyor's height is adjustable by foos on the bottom frame. The c/v belt speed can be regulated by the frequency converter. The belt centering is provided by V-belt glued on the bottom part of the belt and grooves on cylinders. Adjusting is possible by tightening bearing on turn back cylinder.

## **SCOPE OF APPLICATION**

The Weighing conveyor creates a part of Mixing Line for rubber mixtures (Polymer Weighing line). It is intended for transporting and weighing of rubber mixture from the Batchfeeder to the Weighing conveyor.

The equipment is intended to the use in environment where all internal areas of the manufacturing premise, as refers to the external influences to electrical equipment, may be characterized as normal, according to the Annex NM and Table 32-NM1 in ČSN 33 2000-3.

## **FUNCTION**

Rubber strips of the rubber-making mixture that are flowing out of the Batchfeeder are falling down to the low-speed belt of the weighing conveyor, and the material mixture is weighted during this process. Pneum. flaps are closed at this moment. After the required compound quantity has been weighted are pneum. flaps opened and the compound is transports at higher rate to the Feeding conveyor.

Inspection of the presence of material on the Weighing conveyor is by three optical sensors SICK.

It is possible to detect the speed and position of the belt by an induction sensor which detects impulses at the driven cylinder.